

An aerial photograph of a large university campus with various buildings, green spaces, and a mountain range in the background under a blue sky with light clouds. A blue banner is overlaid on the middle of the image.

# CONFIDENTIAL CORPORATE CAMPUS

## CASE STUDY

### CASE STUDY SUMMARY

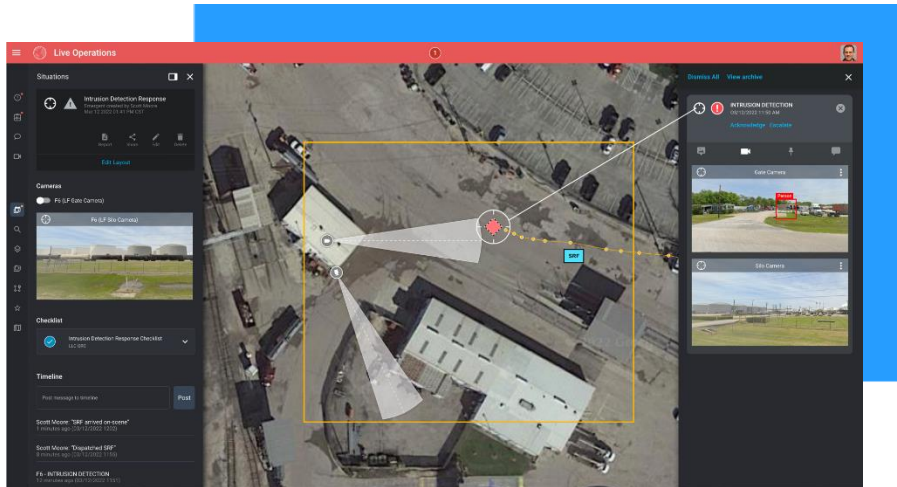


Vidsys is a comprehensive Converged Security and Information Management (CSIM) platform designed to make enterprise security management easier and more effective. Its capabilities extend beyond those of traditional physical security platforms, working to capture and correlate data from multiple physical, logical and IT security systems. Organizations can leverage Vidsys to support a wide range of use cases, including IoT-enabled Smart City development, logistics management, manufacturing, and supply-chain monitoring. The CSIM software platform collects, filters, correlates, and converts vast amounts of disparate data in real-time into valuable and actionable information for situation management.

### OBJECTIVE

Improve overall operational efficiency; Integrate disparate security systems; Leverage existing technology and investments; Implement best-of-breed technologies; Standardize policies and procedures; Provide real-time situational awareness, automated reporting, and logging; Enable the management of security operations from any location

# SOLUTION



The Web browser-based Vidsys system efficiently addressed the primary project challenge of managing and maintaining numerous video and other security technologies, including 1200 Cameras, 2500 two-way devices, 2100 one-way devices, 20 User Licenses, 30 Mobile Licenses, 400 Floor Plans, and street maps of the surrounding area.

## RESULTS



**ALL OBJECTIVES MET** - All of the client's objectives were successfully met by implementing the Vidsys System.



**INTEGRATIONS** - The following systems were integrated into the Vidsys system: Access control, CCTV, Intrusion detection, Fire, BMS, Dispatch, Mobile Devices, Vehicle screening, Campus traffic management