

A wide-angle photograph of a control room. The room is filled with a wall of monitors displaying various feeds, including news, security cameras, and data dashboards. The room has a blue ambient lighting and a curved ceiling with recessed lights. In the foreground, there are desks with computer monitors and keyboards.

# CONFIDENTIAL POLICE & EMERGENCY RESPONSE C2

## CASE STUDY

### CASE STUDY SUMMARY

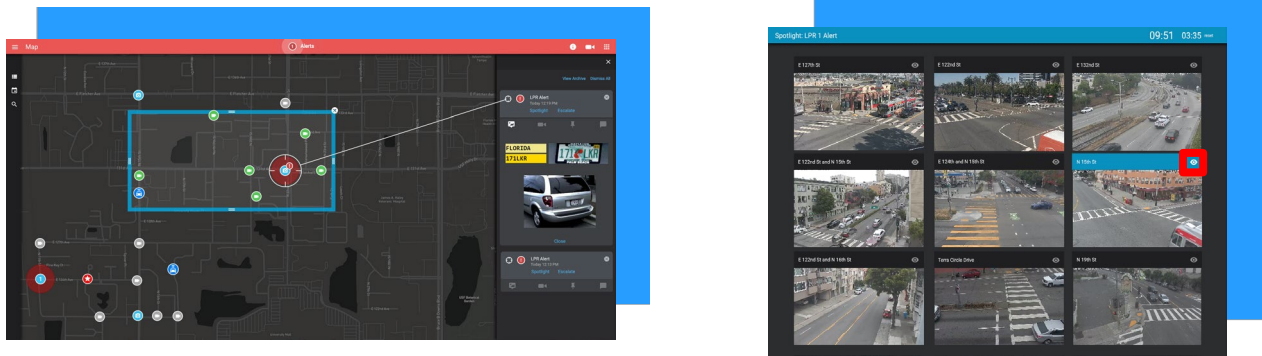
## **AVERT** **C2** COMMAND & CONTROL

AVERT Command & Control (C2) delivers unified, customizable awareness dashboards, applications, and integrations for a multitude of use cases, industries, and locations. With one of the largest integration libraries on the market, AVERT C2 is a flexible and scalable solution that can incorporate an organization's existing data feeds and build custom applications to satisfy their unique needs. With AVERT C2, a host organization can share access to multiple departments or outside partners and maintain complete control over their information.

### OBJECTIVE

The Confidential Police & Emergency Response organization needed an up-to-date Command and Control (C2) system that could leverage the latest technology, while still being able to ingest the existing cameras, sensors and related security and emergency response devices. The new system had to be open architecture and cost efficient.

# SOLUTION



The confidential client selected AVERT C2 system to assimilate sensor feeds, integrate workflows, cut through information clutter, and provide relevant and actionable information to stakeholders. The system, utilizing secure role-based access, provides users with a highly flexible, secure, and configurable solution for asset tracking, overall situational awareness, real-time notification, mission planning, incident response, and after-action reporting. The software platform architecture allows AVERT C2 to ingest and display virtually any sensor feed or system (whether internal to Customer or with external partners)—such as AIS, cameras, LPR, radar, CAD, weather, and alarm systems—while its web-based apps allow users, security operations command center personnel, operations personnel, analysts, and others to quickly interpret information, collaborate, and make actionable recommendations, rather than merely collecting and presenting data.

## RESULTS



The AVERT C2 system is the active C2 system used by the Confidential Client for both Police and Emergency response. The system has been up and running since 2020.

